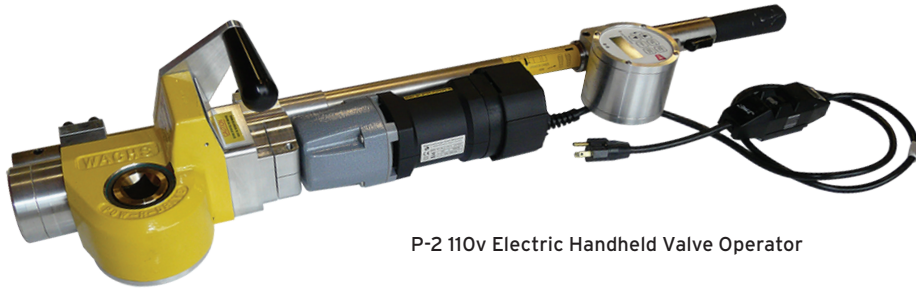


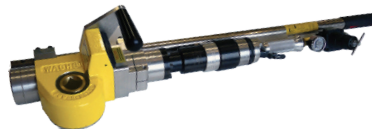
P-2 HANDHELD VALVE OPERATOR



P-2 110v Electric Handheld Valve Operator



P-2 Hydraulic Handheld Valve Operator



P-2 Pneumatic Handheld Valve Operator

The P-2 Handheld Valve Operator offers increased productivity, operator safety and valve protection. Perfect for hard to reach valves, valve exercising and fast shut downs. Delivers controlled power to operated valves from 6in to 60in. Available in High Speed–500ft-lb Torque and Low Speed–800ft-lb Torque models with optional adjustable Torque Control on VITALS models.

RUGGED CONSTRUCTION

- Lightweight, yet designed for heavy day to day use.
- Maximum valve protection with adjustable VITALS Torque Control.*
- Safety features include GFI (ground fault interrupter), speed control, and automatic shut-off.*
- “Finger tip” controls provide rotating direction and automatic shut-off.
- Built in “easy view” LCD counter with automatic forward/reverse provides accurate valve rotation count.
- Easy one man setup and operation-no operating tools required.
- Ergonomic carrying and operating handles ensure operator convenience.
- Machine weight rests on valve key collar, not on the operator, greatly reducing muscle strain and fatigue.
- Gives the operator a sensitive feel of the valve, encouraging the repetitive back and forth motion required for proper valve rehabilitation.

STANDARD EQUIPMENT:

- P-2 Handheld Valve Operator
- Torque arm extension for two man operation
- Fitted Storage Case

OPTIONAL EQUIPMENT:

11-408-00	Telescoping Valve Key to 9ft
11-409-00	Telescoping Valve Key up to 8ft (Warmer Weather) for 2in AWWA Operator Nuts
11-408-01	Telescoping Valve Key up to 9ft (Colder Weather) for 35mm Operator Nuts
11-409-01	Telescoping Valve Key up to 8ft (Warmer Weather) for 35mm Operator Nuts
11-242-03	36in Extension Add-on for Tele-Keys
11-408-10	Tee Handle Adapter for Tele-keys
11-401-00	Universal Handwheel Adapter
SPG-668-PIV	PIV Adapter



Handwheel Accessory



P-2 Handheld Valve Operator shown with handwheel adapter accessory



Highly portable handheld design allows operation of valves from 6-60in



P-2 Handheld Valve Operator is available with optional VITALS Torque Control*

*Electric models only.

P-2

HANDHELD VALVE OPERATOR

SPECIFICATIONS

Machine Capacity:

Operates all gate valves 6in to 60in
(15.3 to 152.4cm) and other equipment
requiring mechanized turning.

Drive:

Sealed lightweight aluminum gearbox
Two state reduction
Planetary primary
Bronze/Steel secondary (12:01 reduction)

Electric Requirements:

110 V AC/220 V AC (15 amp or 3500 W)

Hydraulic Requirements:

8 gpm @ 1800 psi

Pneumatic Requirements:

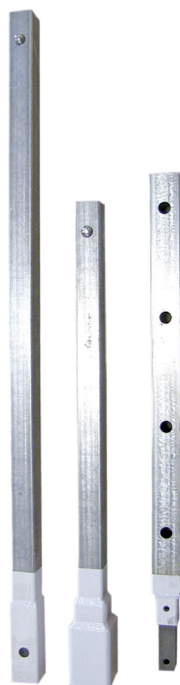
70 cfm @ psi

Peak Torque:

800 ft/lb (1084 N-m)

Finish:

Hard Chrome Plating



Telescoping Valve Key 4-9 feet

ELECTRIC 110 VOLTS¹

TORQUE (FT/LB)	RPM (HIGH SPEED / LOW TORQUE)		RPM (LOW SPEED / HIGH TORQUE)	
	AMPS		AMPS	
100	10	8.6	6	4
200	8*	8*	6.5	6
300	7	11	4	7
375	6	12	4**	8**
500	5	15	4	10
600			3.6	12
700			3	12.5
800			3	13.5

ELECTRIC 220 VOLTS¹

TORQUE (FT/LB)	RPM (HIGH SPEED / LOW TORQUE)		RPM (LOW SPEED / HIGH TORQUE)	
	AMPS		AMPS	
100	10.2	3.1		
175	9.9*	4.4*	5.2	3.2
300	7.4	6.1	4.8	3.5
375	5	7.5	4.5**	4.5**
500	2	10	3.6	5.5
600			2.8	6.2
700			1.5	7.5
800			.5	10

HYDRAULIC

Based on 8 gpm @ 1800 psi

FT-LB	RPM
100	12
175	12
300	12
375	12
500	12 [†]
600	12
700	12
800	11

PNEUMATIC

Based on 90 psi @ 70 cfm

FT-LB	RPM
100	13
200	11
300	7
400	5
500	4 [†]
600	3
700	2
800	1

MODELS

11-000-07	Electric 110V	500 ft-lb 20rpm
11-000-10	Electric 220V	500 ft-lb 20rpm
11-000-08	Pneumatic	500 ft-lb 26rpm
11-000-09	Hydraulic	500 ft-lb 24rpm
11-000-02	Electric 110V	800 ft-lb 10rpm
11-000-05	Electric 220V	800 ft-lb 10rpm
11-000-03	Pneumatic	800 ft-lb 13rpm
11-000-04	Hydraulic	800 ft-lb 12rpm

VITALS TORQUE CONTROL MODELS

11-000-17	Electric 110V	500 ft-lb 20rpm
11-000-20	Electric 220V	500 ft-lb 20rpm
11-000-19	Hydraulic	500 ft-lb 20rpm
11-000-12	Electric 110V	800 ft-lb 10rpm
11-000-15	Electric 220V	800 ft-lb 10rpm
11-000-14	Hydraulic	800 ft-lb 12rpm

CONTACT US TODAY FOR A DEMONSTRATION OR QUOTATION

E-mail: info@ehwachs.com

Telephone: [+1.847.537.8800](tel:+1847.537.8800)

Fax: [+1.815.943.5098](tel:+1815.943.5098)

Visit our website: www.turnvalves.com

¹Charts only apply to models 11-000-02, 11-000-05, 11-000-12, 11-000-15

*Factory rated continuous load high speed/low torque

** Factory rated continuous load low speed/high torque

† Factory rated continuous load